

NEWSLETTER



ITMA 2011 - Barcelona

MAGEBA - the system provider for the narrow fabric industry, your partner from warping up to the final made up product on display at this year's ITMA.

This issue of our newsletter offers you a guideline for the machines that will be shown at the Barcelona exhibition. Please be invited to discover new developments, redesigned and improved features, but also well known successfully selling machines.

Our location on the exhibition area: Hall 3, Booth no. D-121



WARPING

This well proven warper model is available in both elastic yarn execution (Lycra, Spandex, rubber or others) with corresponding positively driven creels as well as in standard rigid yarn execution (texturised Polyesters or Nylon as well as Cotton, Rayon or Viscose).

The beam dimension is max. 400 mm \varnothing x 350 mm length. It comes with expansion reed - as well as with entrance reed and leasing reed.

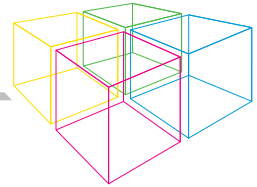
The machine features pre-selectable meter counter and high operation speed obtained via infinitely variable AC motor drive with low energy consumption and high output. Warping speeds up to 450 m/min on elastic yarn, 600 m/min on standard yarn and special execution up to 800 m/min.

Warper BSC 12



Ionisation devices prevent build-up of static electricity. The drive is also equipped with a slow motion forward and backward. The machine comes with CE certification.

Other machine models not on display at ITMA are BSC 8, BSC 16, BSC 27 and BSC 31, whereas the number indicates the beam diameter. There are several beam sizes available.



Needle Loom Type MN 4/70



This weaving machine is an efficient and solid construction to produce 4 light to medium weight elastic or rigid tapes.

It is equipped with 14 shafts and has a maximum reed width of 70 mm.

Our MN 4/70 will be displayed, producing an elastic article. It is completed by „S-Drive“ weft yarn feed as well as a frequency controlled motor drive.

Needle Loom Type MN 8/30

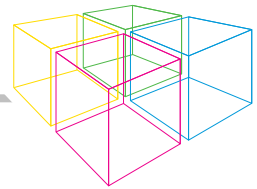


Our weaving machine type MN 8/30 is a well-engineered machine at sensible cost. Its reliability is world famous.

It is the ideal machine to produce light and medium weight elastic or rigid narrow fabrics and is equipped with 16 shafts and has a maximum reed width of 30 mm.

The loom will be displayed with shoe laces in a flat and in a round design, made from Polyester.

Further equipment will be “S-Drive” weft yarn feed and a frequency controlled motor drive for a smooth adjustment of speed.



WEAVING

New!

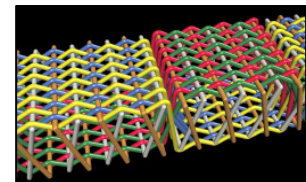
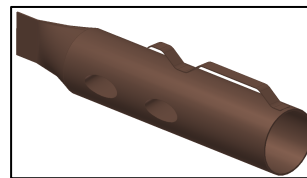
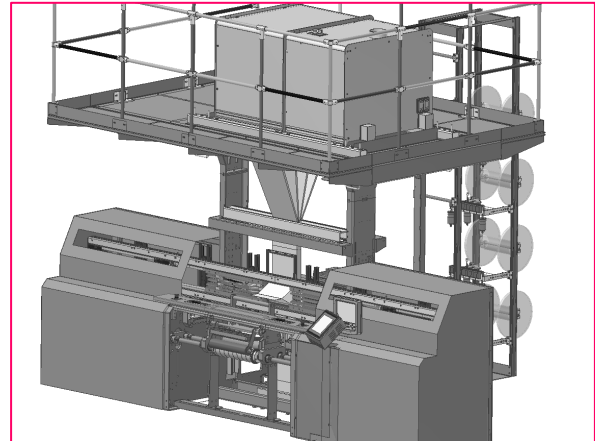
**Shuttle Loom
Type SSL MV**

This brand new **shuttle loom type SSL MV** features a combination of a 4-shuttle weft insertion and a special innovative shedding. This achieved by use of the **Unival 100-Jacquard**, made by Stäubli. The 1064 harness cords of the jacquard are individually controlled by mini servo motors and allow flexible, freely-programmable warp thread shedding across the entire width of the fabric.

It is possible to generate several sheds at the same time, ensuring a multi-shuttle simultaneous weft insertion. This new machine configuration allows for the creation of new multi-dimensional weaving structures and ensures increased productivity.

The loom has been developed to enlarge the field of applications for complex design structures, such as multi-dimensional, multi-layer fabric for profiles and near to net-shape fabrics made of carbon and glass fibre.

For designing and visualization of complex weaving constructions, a special software for Mageba shuttle looms is available.



WEAVING

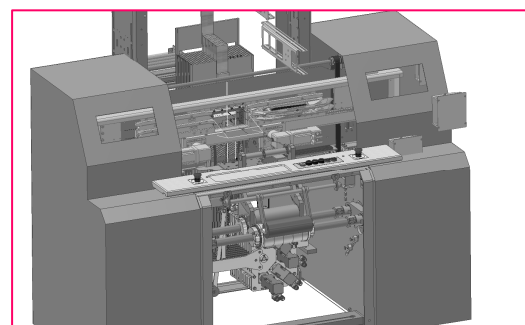
New!

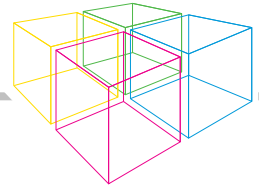
**Shuttle Loom
Type SL MT 1/180**

The second shuttle loom on display – a single station loom - **type SL MT 1/180** aims at the flexible and economical production of versatile complex medical and technical narrow fabrics.

This new shuttle loom model is equipped with a 2-shuttle weft insertion and the new freely selectable servo driven electronic dobby with 16 shafts offers an indefinite repeat length.

Both shuttle looms have manifold options like variable weft density, programmable V-reed for the variation of the fabric width and fabric dependent parameterization, for an optimal process. Again, equipped with servo motors to ensure high efficiency.





Dyeing Range Type "Green Line"



DYEING and FINISHING

New!



Economy and ecology at its best with the Mageba „**GREEN LINE**“ machine concept. As the market leader in continuous dyeing, the development and design of revolutionary machine solutions is our constant target.

Not only does the Mageba „**GREEN LINE**“ machine concept comply with the rising ecological and economical standards but is even trendsetting for future environmental and economic challenges.

On display will be the latest innovation in continuous dyeing, assuring highest efficiency at ecological balance, thoroughly from start to finish.

Impregnation and Coating Range for Ropes and Cords Type "RopeLiner"



DYEING and FINISHING



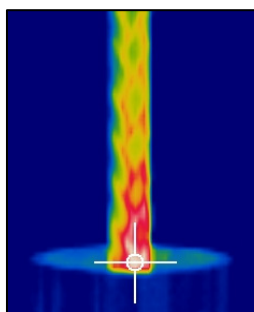
The RopeLiner ranges consist of a coating unit, a pre-dryer system and a stretching unit with warm air dryer. The pre-dryer is a system combining microwave and infrared drying.

The traction force applied during the stretching process is controlled by means of a load cell installed in the stretching unit.

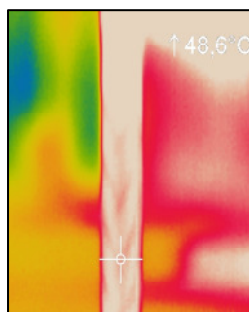
The combination of microwave and infrared drying is very productive.

The new microwave drying system offers an efficient and gentle drying process of ropes from the inside to the outside.

Infrared waves are short waves with less penetration into the rope so that a drying process from outside to inside is ensured.

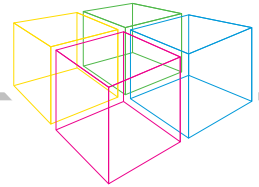


Microwave Drying



Infrared Drying

New!



ITMA 2011
www.itma.com

INSPECTION

Inspection Machine Type "FibreScan"

We will be demonstrating the Automatic Narrow Fabric Inspection System c1360, one of a range of inspection solutions for the narrow fabric industry. This particular machine has become the standard equipment for elastic and ribbon manufacturers across the world.

With this machine, plain, patterned, logo and Jacquard ribbons as well as elastics can be processed at up to 280 meters per minute. Being fully computer controlled with FibreScan's unique multi fabric processing algorithm, the machine requires little operator intervention.

Not only fast in production but also fast in fabric changeover: it takes 90 seconds to change from say a logo pattern to a plain fabric with pico edge. The system can typically inspect up to 95% of all production styles - at better than 95% inspection efficiency.

Now available with full production and quality monitoring on a date and shift basis.



We look forward to meet you at our Stand D121 Hall No 3!

***Do not miss your chance to learn more about the future world
of Narrow Fabric Textile Machinery***

with



The System Provider for the Narrow Fabric Industry